

FRENCH NAVAL PERSPECTIVE

Odile Gérard

DGA Naval Systems, Toulon, France

BRS Symposium, St Andrews, October 2015

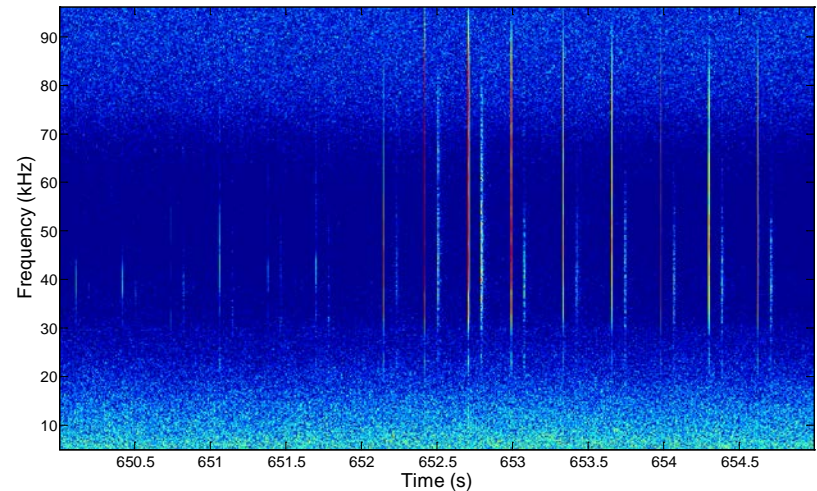
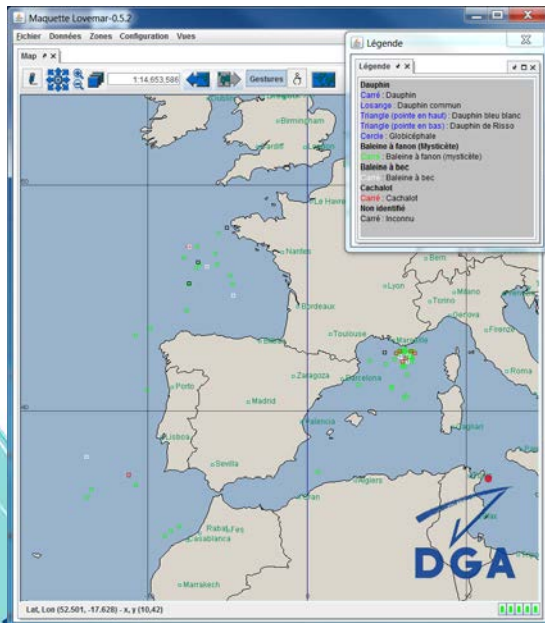


MINISTÈRE
DE LA DÉFENSE



OVERVIEW

- French Navy Interests
- Marine mammal risk mitigation project objectives
- How is BRS useful ?
- What are the data gaps ?



FRENCH NAVY INTEREST

- Interest in using active sonar in a transparent and responsible way...
- to understand the effects of sonar in a scientific and proactive way
- It is a high priority to be part of the international community to understand the effects of sonar on marine mammals

MARINE MAMMAL MITIGATION PROJECT

■ Objectives:

- Marine mammal database and habitat modeling
- Better understand the effects of naval sonar on Marine Mammals and how to mitigate them in order to update the guidelines for sonar use
 - Bibliography
 - Funding the 3 S BRS project (associate sponsor)
- Modeling Tools
 - To calculate the impact zone of sonar (acoustic propagation)
 - Modeling the behavior of marine mammal in presence of sonar
- Work on Detection and Classification of Marine Mammal Signals

→ To provide the French Navy with tools to mitigate the risks

HOW IS BRS USEFUL ?

- Marine mammal database and habitat modeling
- Better understand the effect of naval sonar on Marine Mammal and how to mitigate them
- Modeling Tools
 - To calculate the impact zone of sonar (acoustic propagation)
 - Modeling the behavior of marine mammal in presence of sonar
- Work on Detection and Classification of Marine Mammal Signals

DATA GAPS

- What else should be tested (or more tested) ?
 - More animals per species
 - More species
 - The role of
 - Behavioral context (foraging, mating...)
 - Body condition
 - Social composition (presence of calves ...)
 - Geographic location or population
 - Predation Risk Disturbance Hypothesis (C. Cure's Talk)
 - Various types of classical sonar signals
 - Multiple sources
 - New sonar signal types (CAS,)

DATA GAPS

- What is (are) the main response driver(s)?
 - Received Level ? Distance ? Cumulated Received level? Other ?
 - Combination
 - Is it dependent
 - on species? on signals ?..on.RL ?(E Henderson's talk)
- How to mitigate ?
 - Ramp-up
 - Type of signals (Frequency content.....)
 - Other
 - Is it species dependant ?

DATA GAPS & PRIORITIZATION

- How to extrapolate from BRS to:
 - Real exercise
 - Population level

- How to prioritize?
 - Avoid the strongest effects
 - Sensitive & endangered species (beaked whales...)
 - Be responsible
 - Estimate the effects of new sonar (CAS...)
 - How to mitigate ?
 - Understand the response driver

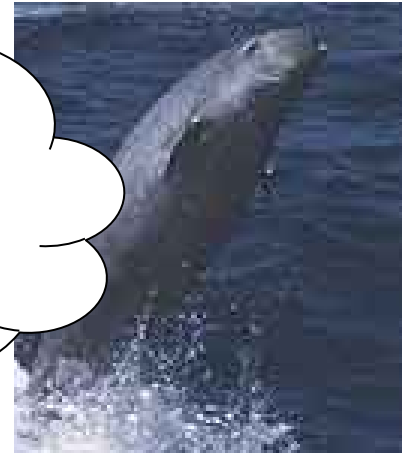
THANK YOU FOR YOUR ATTENTION

ARKive
www.arkive.org



© Lisa Steiner / SplashdownDirect.com

Questions ?



www.companyofwhales.co.uk

